

2013

Dry Forest Zone Maps



Acknowledgments:

This project is made possible through financial support from the US Endowment for Forestry and Communities and USDA Rural Development.

About the Dry Forest Investment Zone:

The Dry Forest Investment Zone (DFIZ) is a five-year project to address common natural resource-based economic development challenges through increased networking and capacity building at a regional scale. Sustainable Northwest leads this project in partnership with Wallowa Resources in northeastern Oregon, the Watershed Research and Training Center in northern California, and the Ecosystem Workforce Program at the University of Oregon. The central components of the DFIZ strategy are: 1) To build strong local nonprofit organizations and collaborative processes to achieve forest and economic resilience, 2) Create multiple value streams from land management and incentives for forest restoration and stewardship, 3) Develop integrated biomass utilization and renewable energy; and 4) Create the policy conditions to support sustainable forest stewardship on public and private lands.

Cover photo: Emily Jane Davis, Ecosystem Workforce Program

Maps: Branden Rishel, Ecosystem Workforce Program

For additional information on the Dry Forest Zone project and its partners, contact:

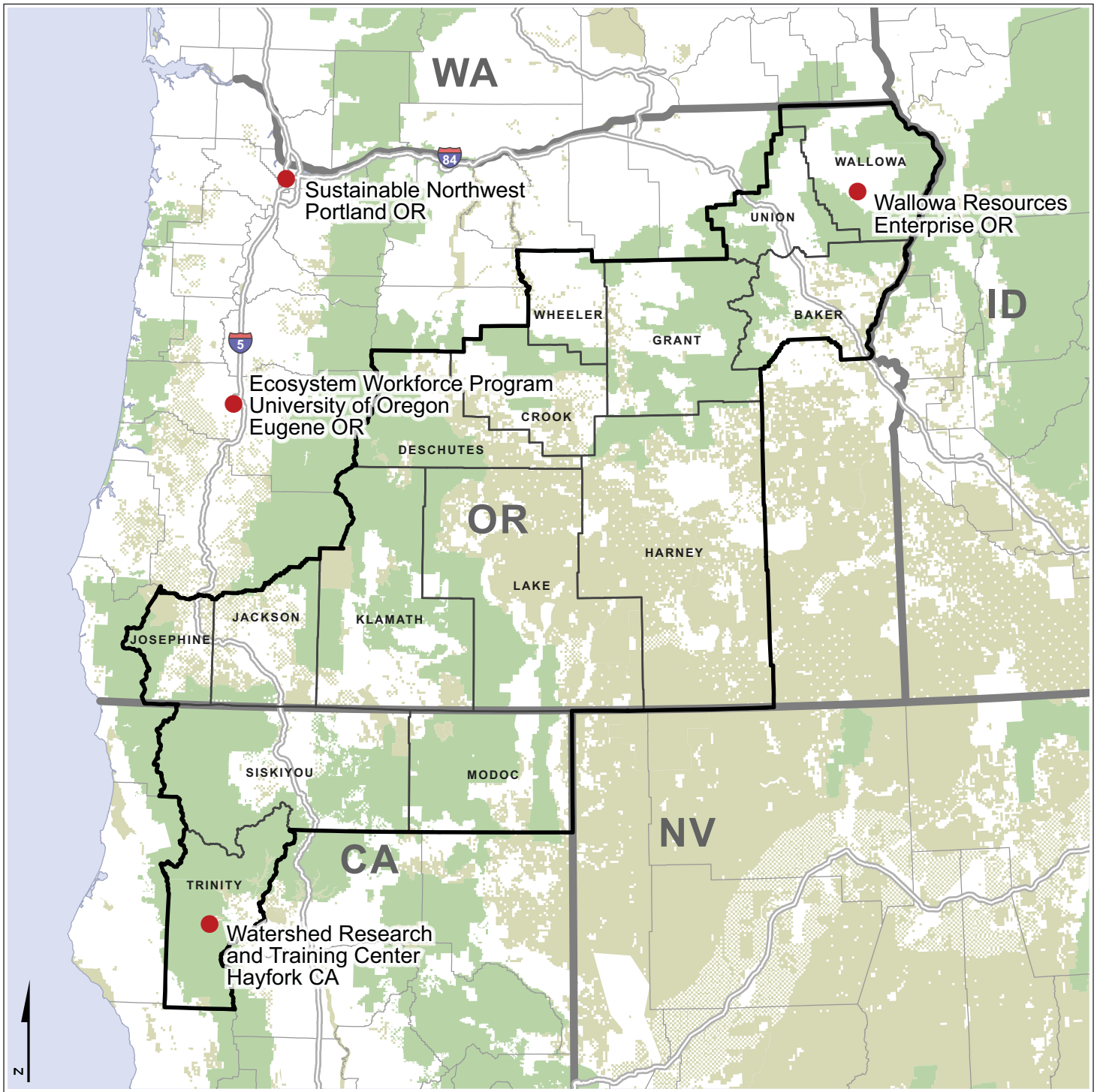
Sustainable Northwest
813 SW Alder St, Suite 500
Portland, OR, 97205-3113
503-221-6911
info@sustainablenorthwest.org
www.sustainablenorthwest.org/programs/dfiz

For more information about this report, contact:

Ecosystem Workforce Program
Institute for a Sustainable Environment
5247 University of Oregon
Eugene, OR 97403-5247
541-346-4545
ewp@uoregon.edu
ewp.uoregon.edu

Executive team locations

Dry Forest Investment Zone



Data source: EWP

EXECUTIVE TEAM

Sustainable Northwest leads the DFIZ project in partnership with Wallowa Resources, the Watershed Research and Training Center, and the Ecosystem Workforce Program at the University of Oregon. This project is funded by the US Endowment for Forestry and Communities and USDA Rural Development.

0 Miles 100



Interstates



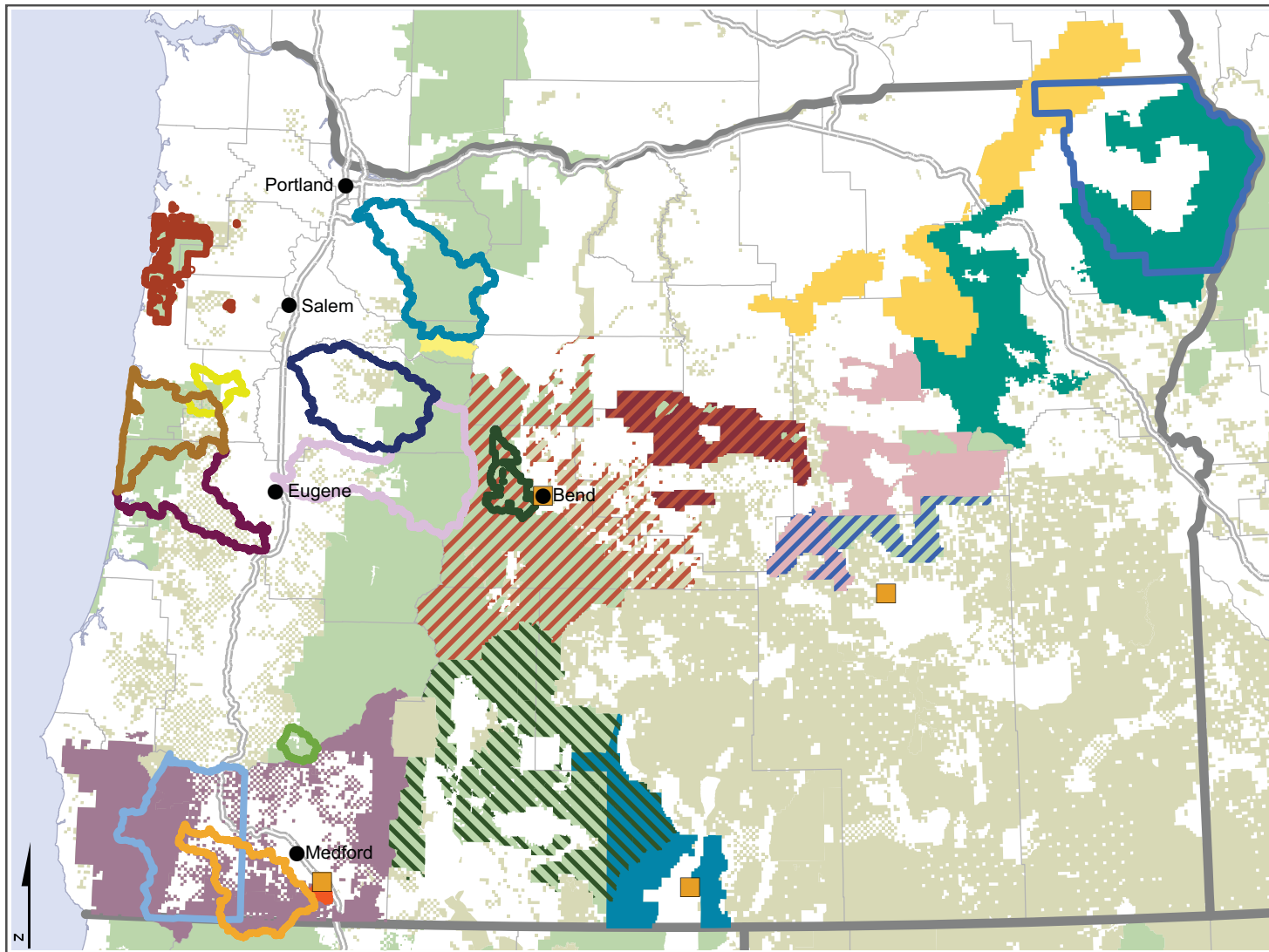
US Forest Service lands



Other federal lands

Multi-stakeholder forest collaborative groups working on public lands

Oregon













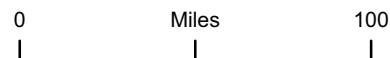
Data collected by EWP

Public lands collaboratives

-  Ashland Forest Resiliency Stewardship Project
-  Black Hills Collaborative Project
-  Blue Mountains Forest Partners
-  Central OR Partnerships for Wildfire Risk Reduction
-  Harney County Restoration Collaborative
-  Lakeview Stewardship Group
-  North Santiam Forest Collaborative
-  Ochoco Forest Restoration Collaborative
-  Southern OR Forest Restoration Collaborative
-  Umatilla Forest Collaborative Group
-  Willowa-Whitman National Forest Collaborative

All lands collaboratives

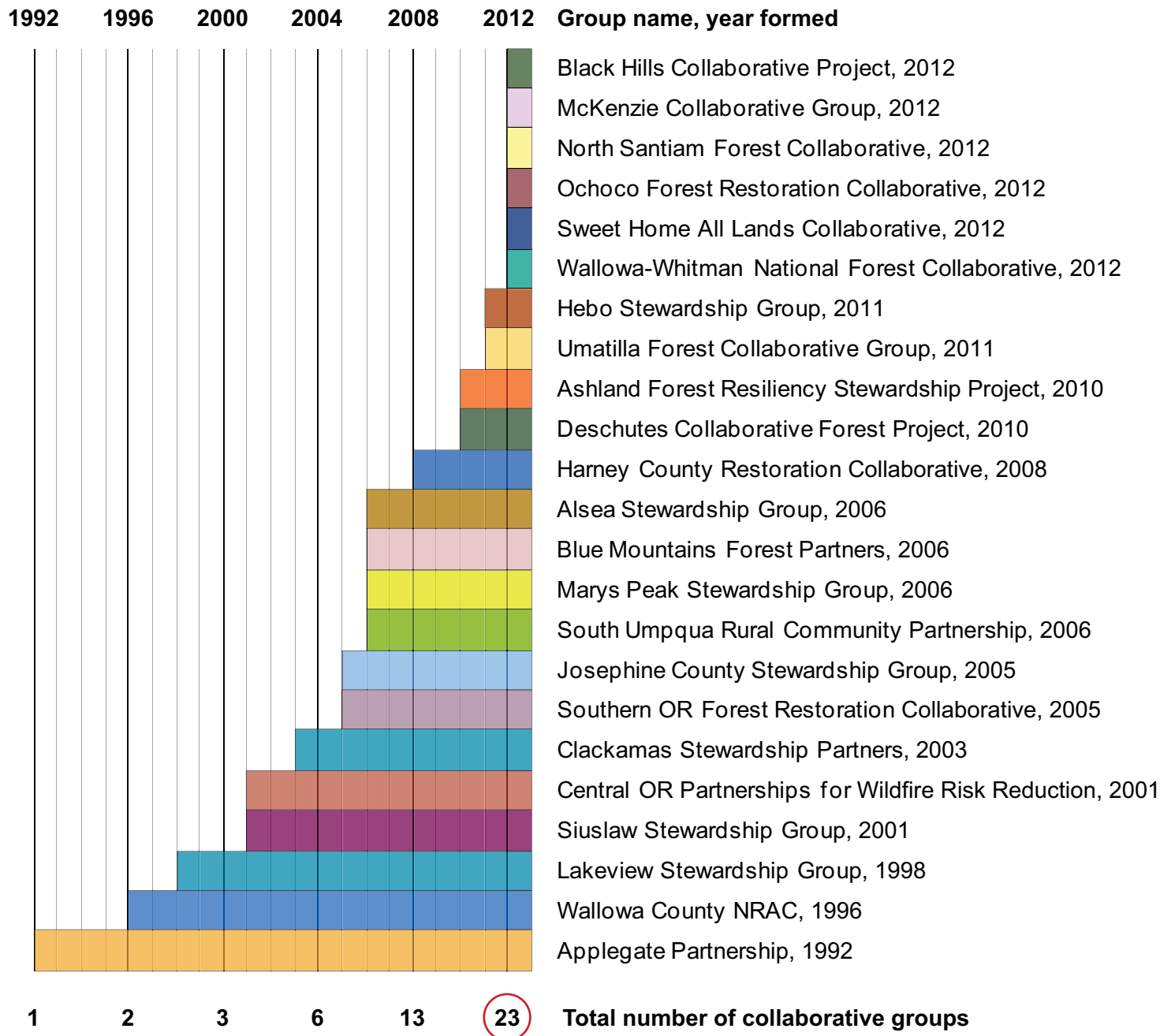
-  Alsea Stewardship Group
-  Applegate Partnership
-  Clackamas Stewardship Partners
-  Deschutes Collaborative Forest Project
-  Hebo Stewardship Group
-  Josephine County Stewardship Group
-  Marys Peak Stewardship Group
-  McKenzie Collaborative Group
-  Siuslaw Stewardship Group
-  South Umpqua Rural Community Partnership
-  Sweet Home All Lands Collaborative
-  Willowa County NRAC



-  Cities of over 50,000 people
-  Community-based natural resource organizations
-  Interstates
-  US Forest Service lands
-  Other federal lands

Timeline of active multi-stakeholder forest collaborative groups

Oregon

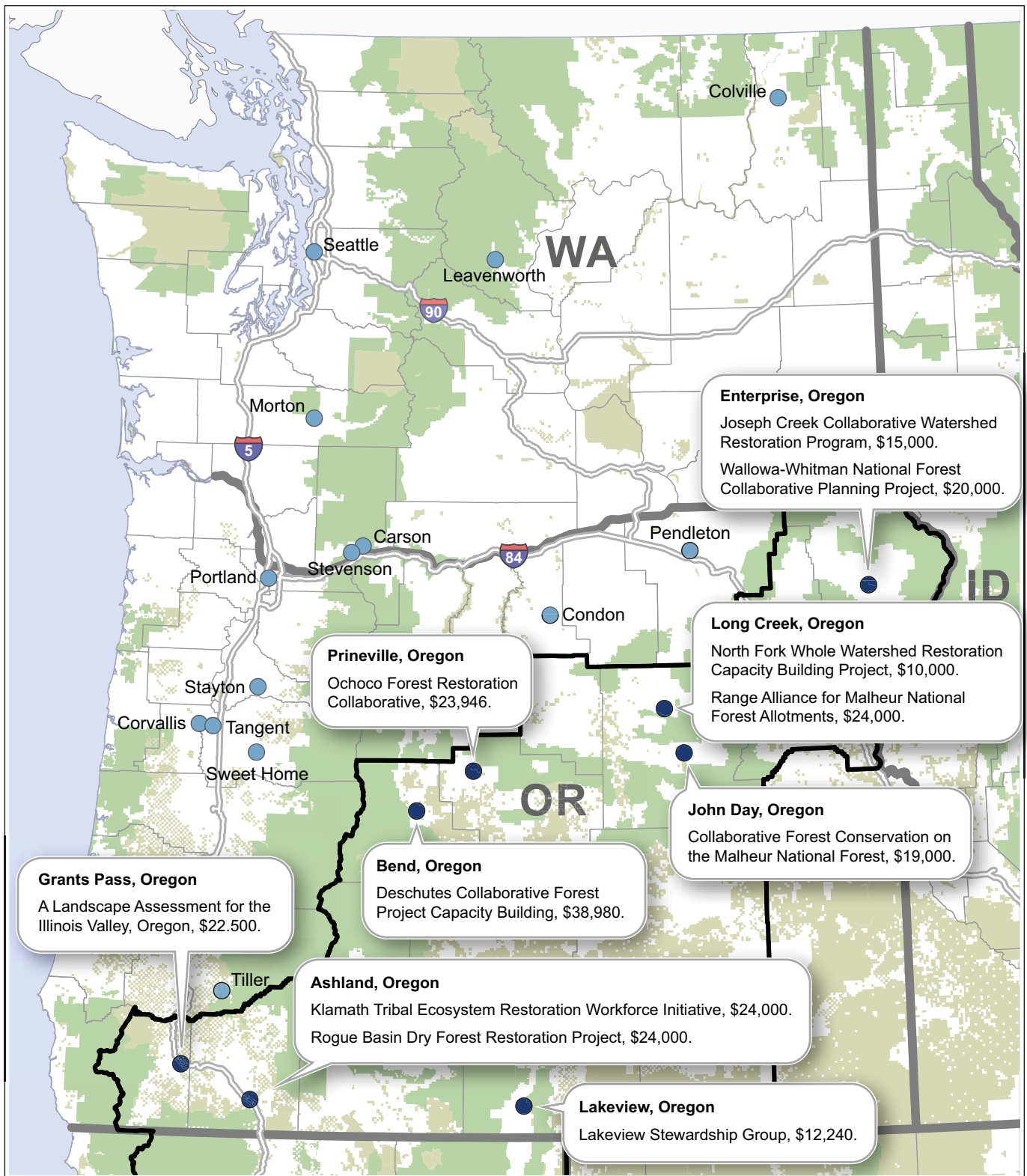


MORE COLLABORATIVE GROUPS

There are at least 23 collaborative groups and several active community-based organizations in Oregon. Ten new collaboratives have emerged since the start of the DFIZ project. These groups build agreement and engage diverse stakeholders in fostering natural resource management and economic development. This does not include collaboratives that no longer exist.

Community Capacity and Land Stewardship Program

Forest Service Region 6



Data source: National Forest Foundation

Created in 2011, the National Forest Foundation's Community Capacity and Land Stewardship Program provides support to collaborative efforts to accomplish restoration and build sustainable local economies. This program fills a crucial gap by providing resources for capacity building and organizational operations, which is rarely possible with programmatic funding.

Recipient locations

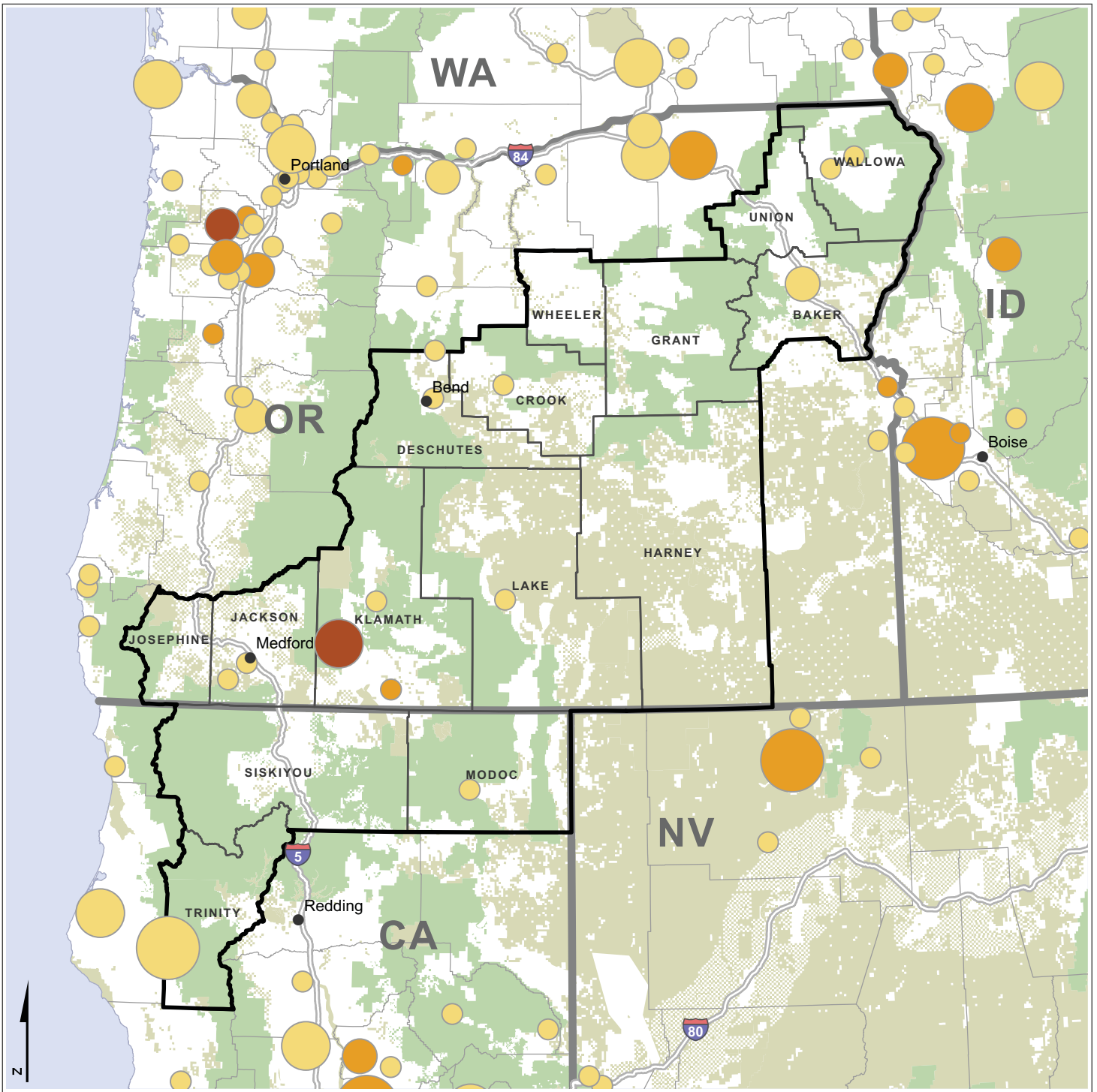
- In DFIZ
- Elsewhere in Forest Service Region 6

0 Miles 100

- Interstates
- US Forest Service lands
- Other federal lands

USDA Rural Development Business & Cooperative program spending, FY2012

Dry Forest Investment Zone



Data Source: USA Spending

GRANTS & LOANS AWARDED, FY2012

Rural Development's Business and Cooperative programs offer grants and loans to economic development organizations and businesses. About 12% of money received in the DFIZ in 2012 went to entities working on integrated natural resource management and economic development. This map does not include data from other Rural Development programs.

Total value

- < \$100,000
- \$100,000 - \$500,000
- \$500,001 - \$2,500,000
- > \$2,500,000

Total number

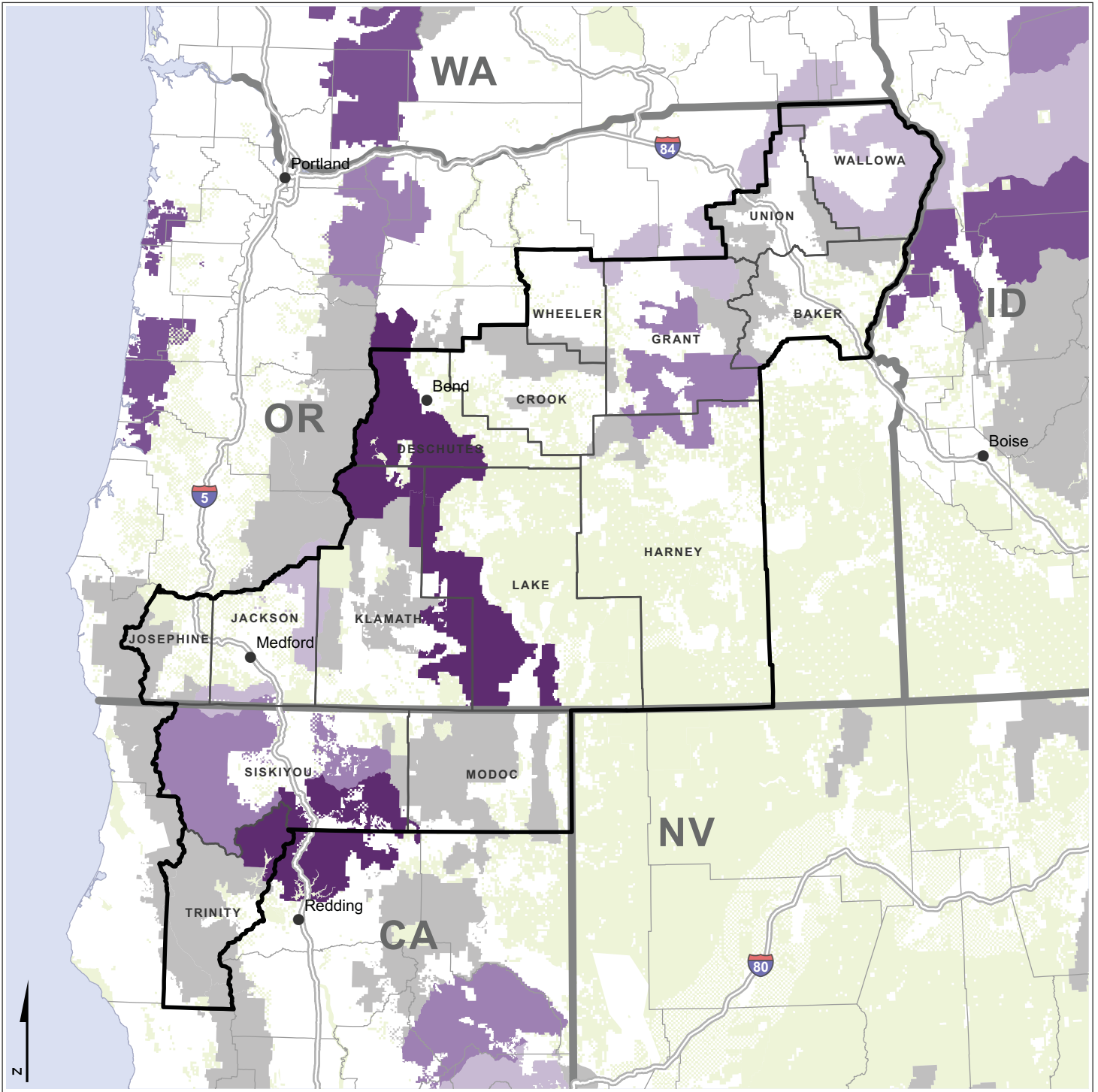
- 1
- 2 - 3
- 4 - 6

0 Miles 100

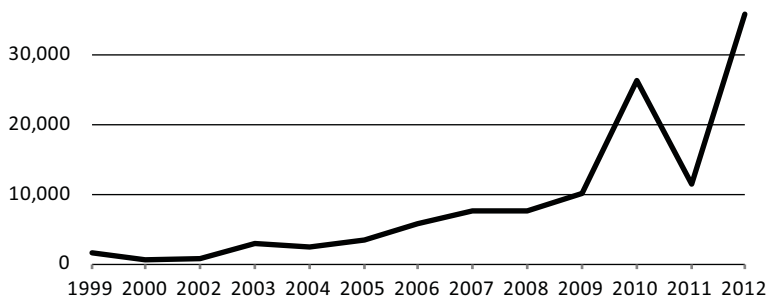
- Interstates
- US Forest Service lands
- Other federal lands

Stewardship contracting on national forests, FY2012

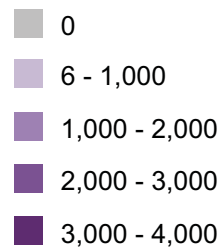
Dry Forest Investment Zone



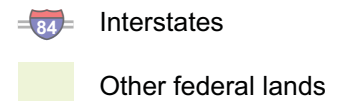
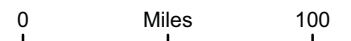
ANNUAL NATIONAL FOREST ACRES TREATED WITH STEWARDSHIP CONTRACTING IN THE DFIZ, FY1999-2012



Number of acres treated, FY2012

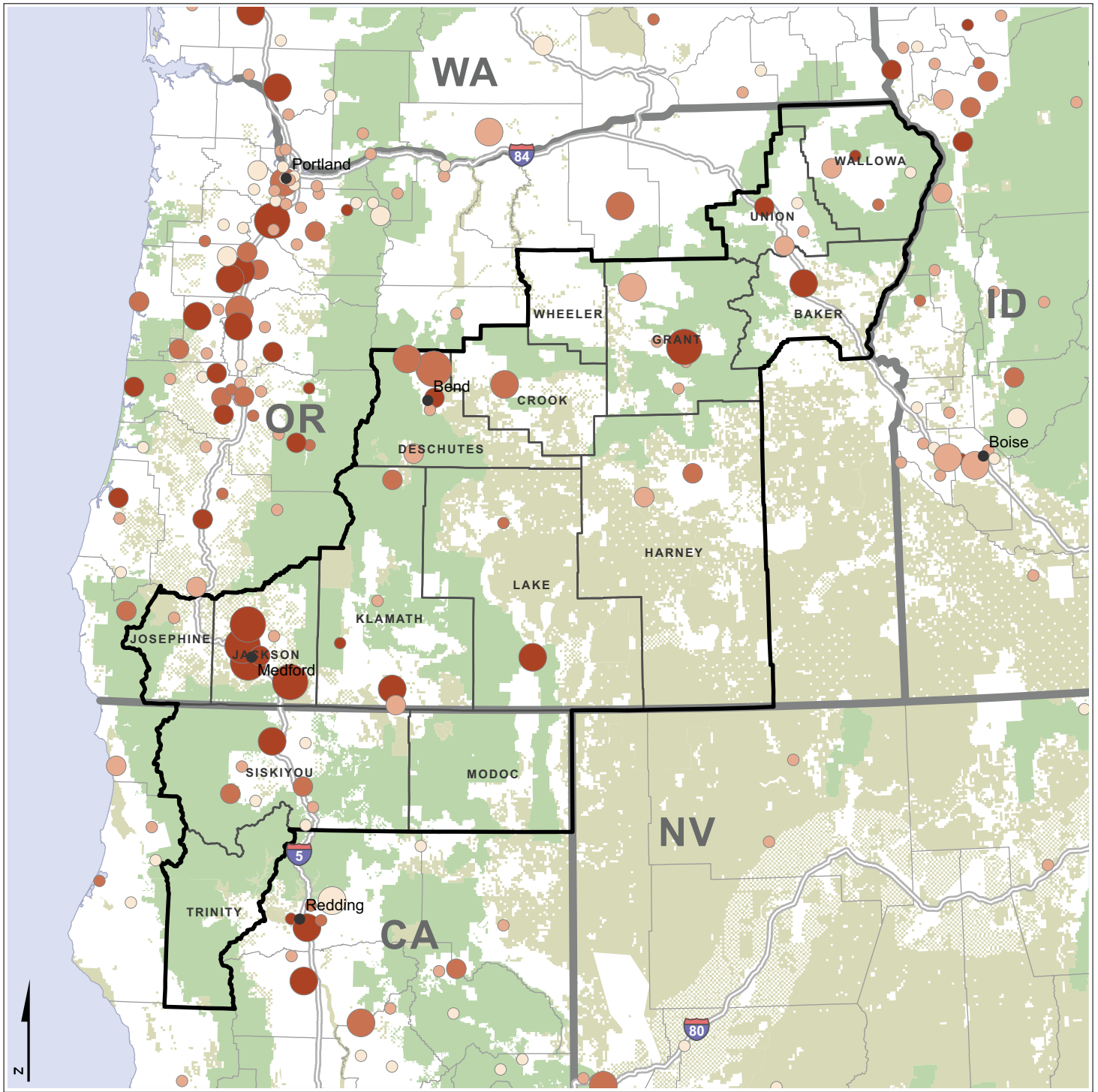


Data source: US Forest Service



Forest Service contracts awarded for restoration-related work, FY2012

Dry Forest Investment Zone



Data Source: USA Spending

FOREST SERVICE CONTRACTS AWARDED

The US Forest Service awards contracts for businesses to perform forest and watershed restoration work on national forestlands in the DFIZ. Areas such as Jackson County have a high density of contractor capacity, but contractors from outside the DFIZ perform much of the restoration work in the DFIZ.

Total value

- < \$150,000
- \$150,000 - \$1,000,000
- \$1,000,001 - \$5,000,000
- > \$5,000,000

Total number

- 1
- 2 - 5
- 6 - 10
- > 10

0 Miles 100

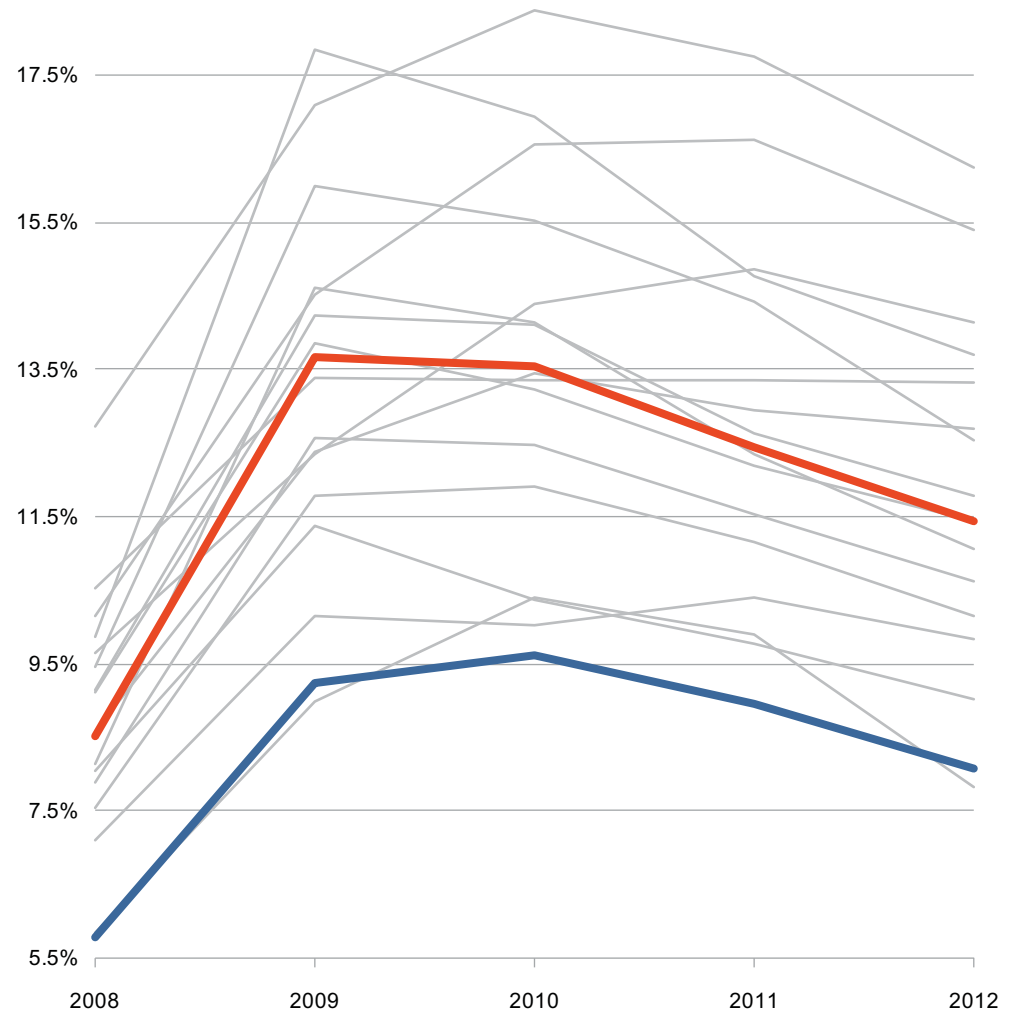
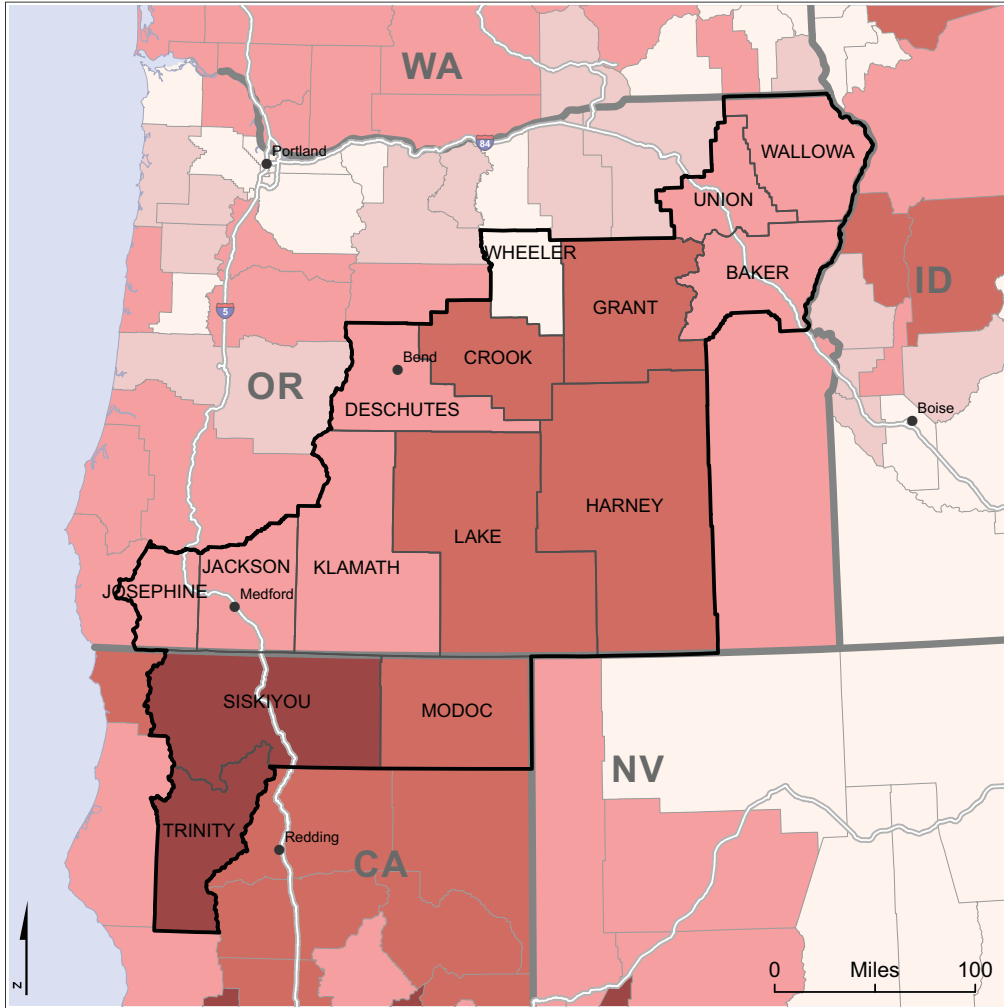
- Interstates
- US Forest Service lands
- Other federal lands

2012 Unemployment rate and trend 2008-2012

Dry Forest Investment Zone

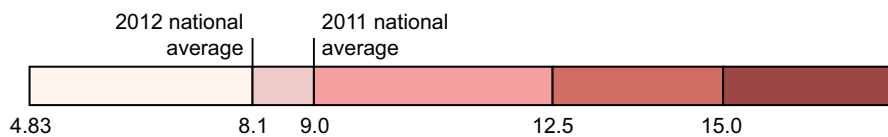
Unemployment rates in the DFIZ from 2008-2012 averaged 11.9%, which is substantially higher than the national average of 8.3%. Trinity, Crook, Siskiyou, and Harney Counties have experienced rates over 15% in the past four years.

Unemployment rate in 2012



Percent, 2012

Data source: Bureau of Labor Statistics



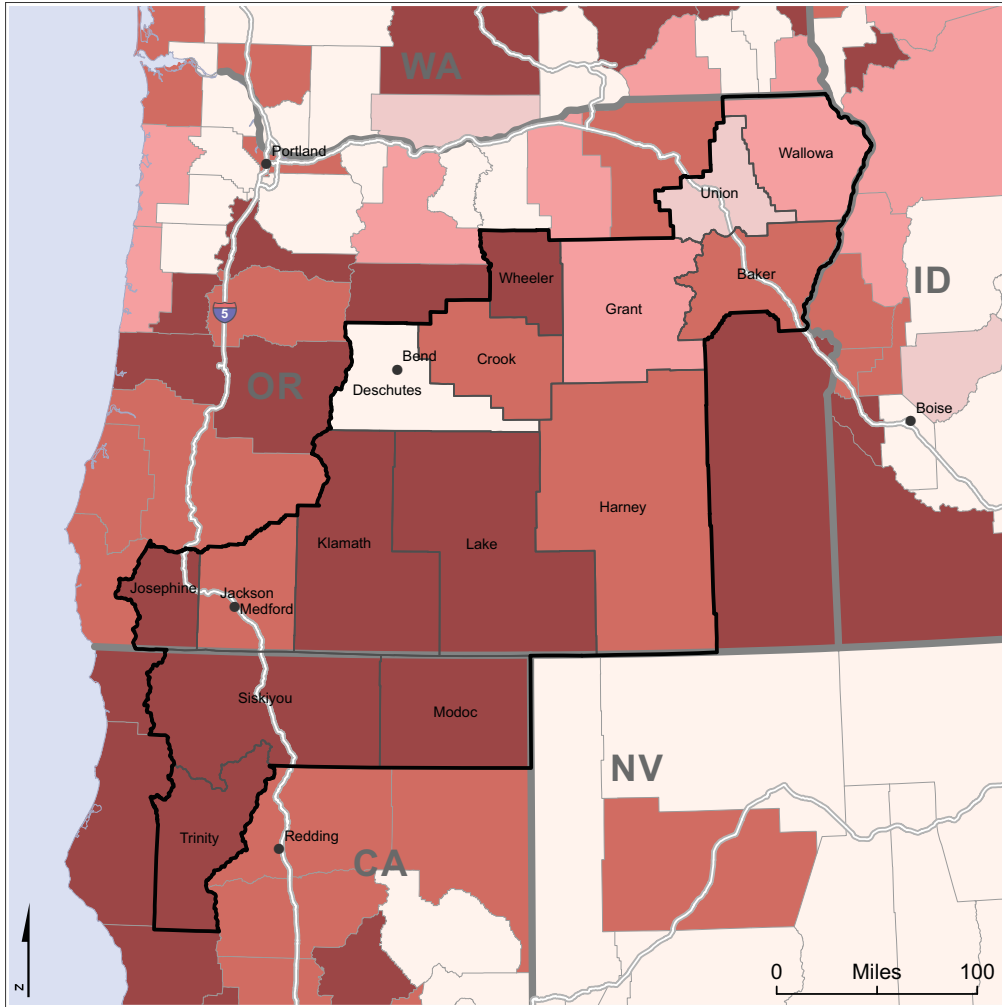
- DFIZ counties
- DFIZ average
- United States

2011 Poverty level and trend 2007-2011

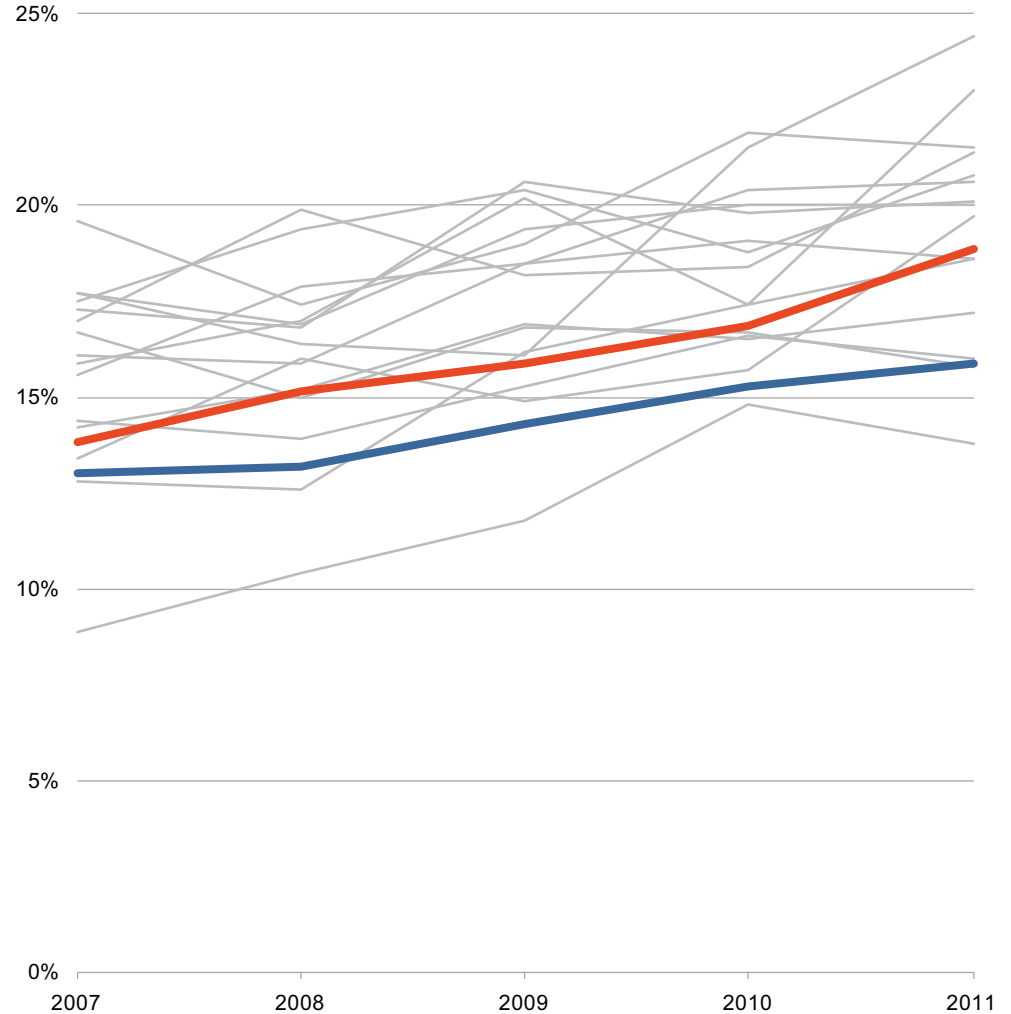
Dry Forest Investment Zone

The average poverty level in the DFIZ is higher and had increased more than the national average. In 2011, Josephine, Klamath, Lake, Modoc, Siskiyou, Trinity, and Wheeler Counties had poverty levels over 20%.

Poverty levels in 2011



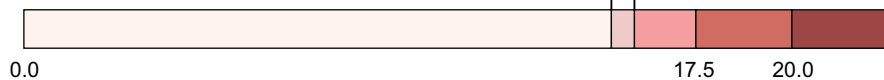
Data source: Census Bureau SAIPE



Percent, 2011

2010 national average 15.3%

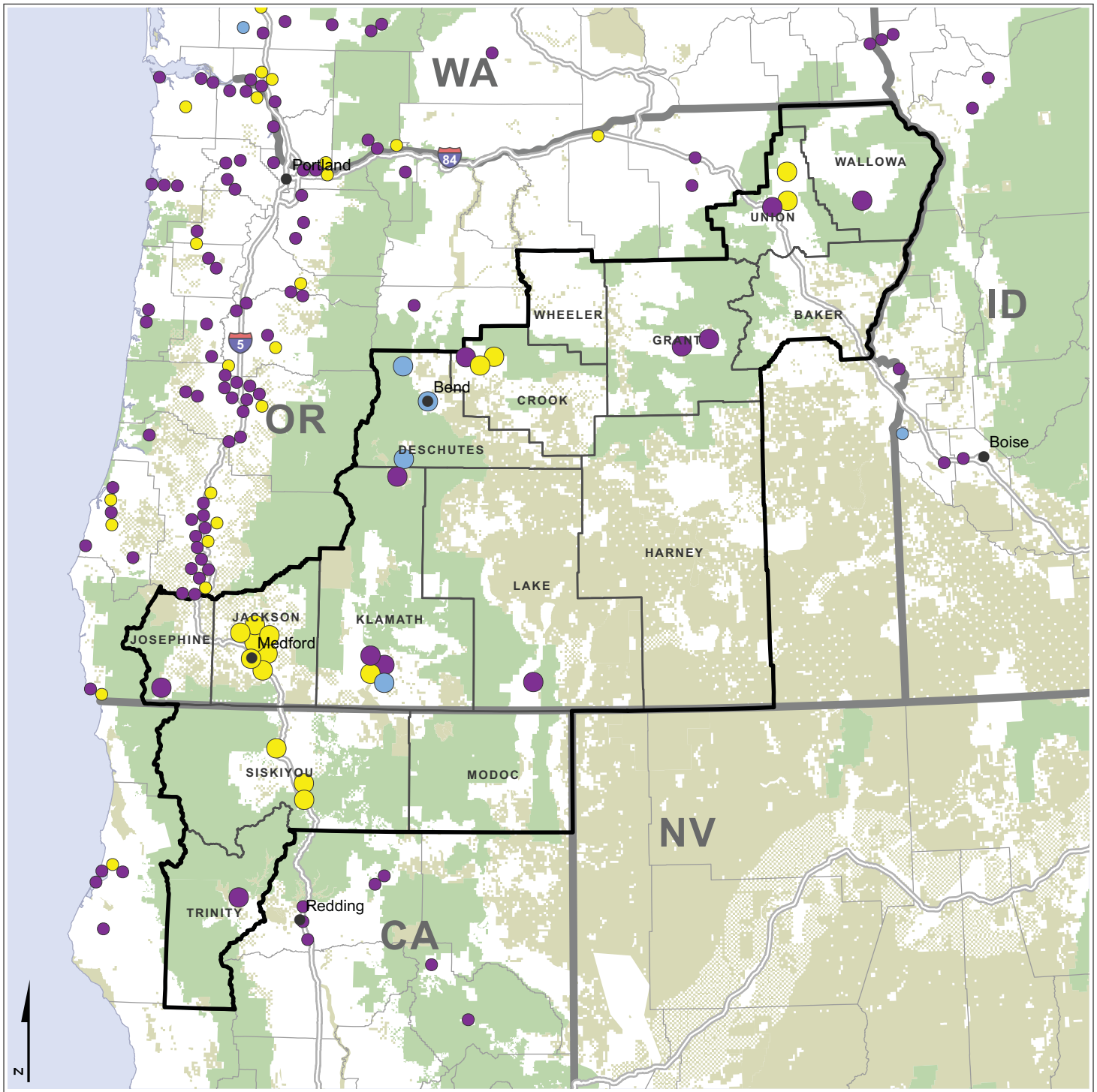
2011 national average 15.9%



- DFIZ counties
- DFIZ average
- United States

Primary wood products processing facilities, 2012

Dry Forest Investment Zone



Data source: EWP

PRIMARY WOOD PRODUCTS PROCESSING FACILITIES

Primary processing infrastructure provides employment and utilizes larger-diameter logs, which remain the foundation of the timber market. The traditional wood products industry in the DFIZ is significantly smaller than in the past. Depressed housing markets continue to affect the viability of this infrastructure.

Facility type

- Sawmill
- Post and pole
- Pulp, paper, chip, plywood, veneer, and other laminates

0 Miles 100



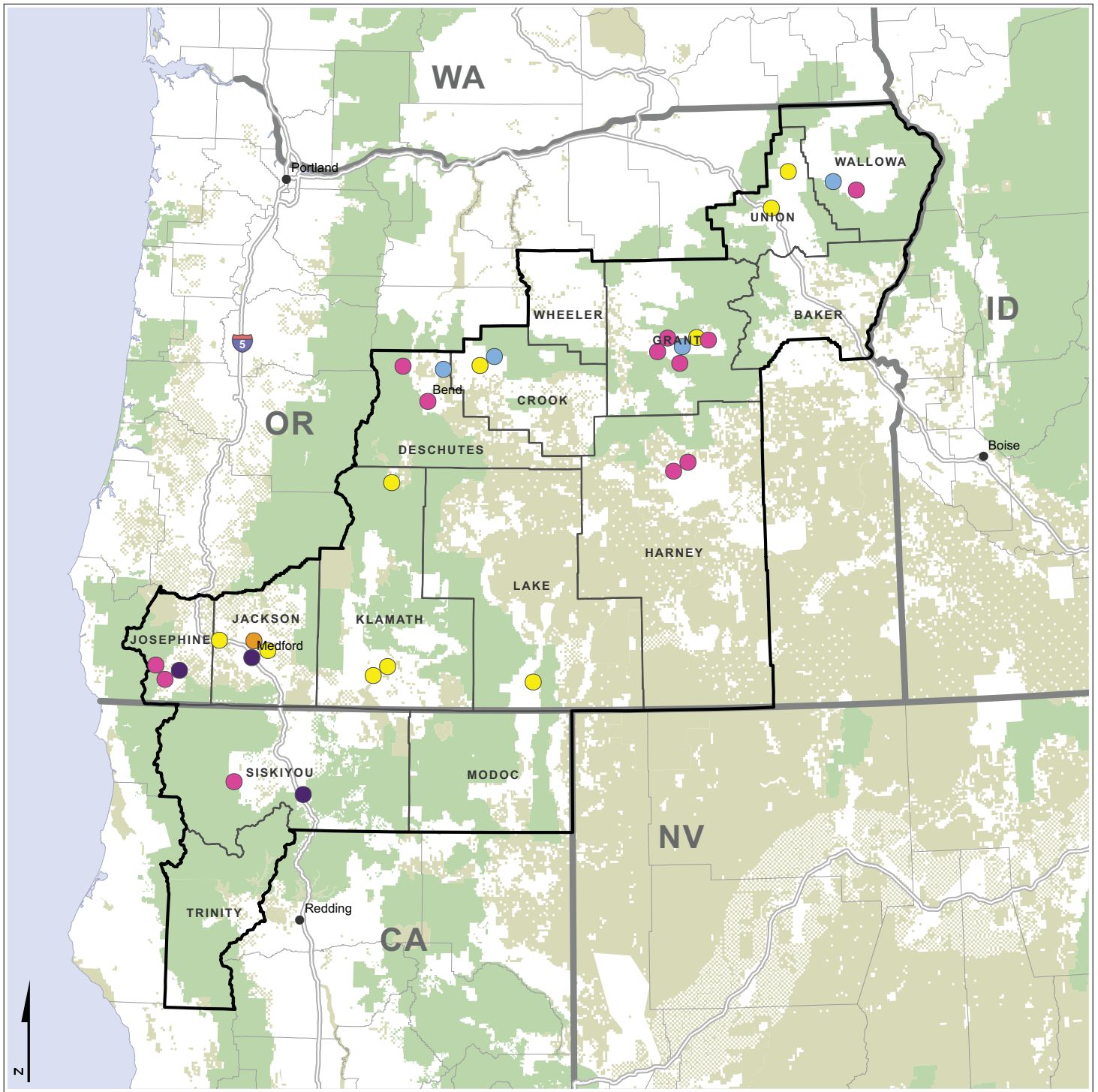
Interstates

US Forest Service lands

Other federal lands

Wood-to-energy market, 2012

Dry Forest Investment Zone



Data source: EWP

BIOMASS ENERGY FACILITIES

The DFIZ has diverse infrastructure for utilizing woody biomass for energy. Clusters of biomass energy producers and end users have emerged across the region, especially in Grant County, Oregon.

Biomass facility type

- Combined heat and power
- Densified fuels
- Electricity
- Process heat
- Space heat

0 Miles 100

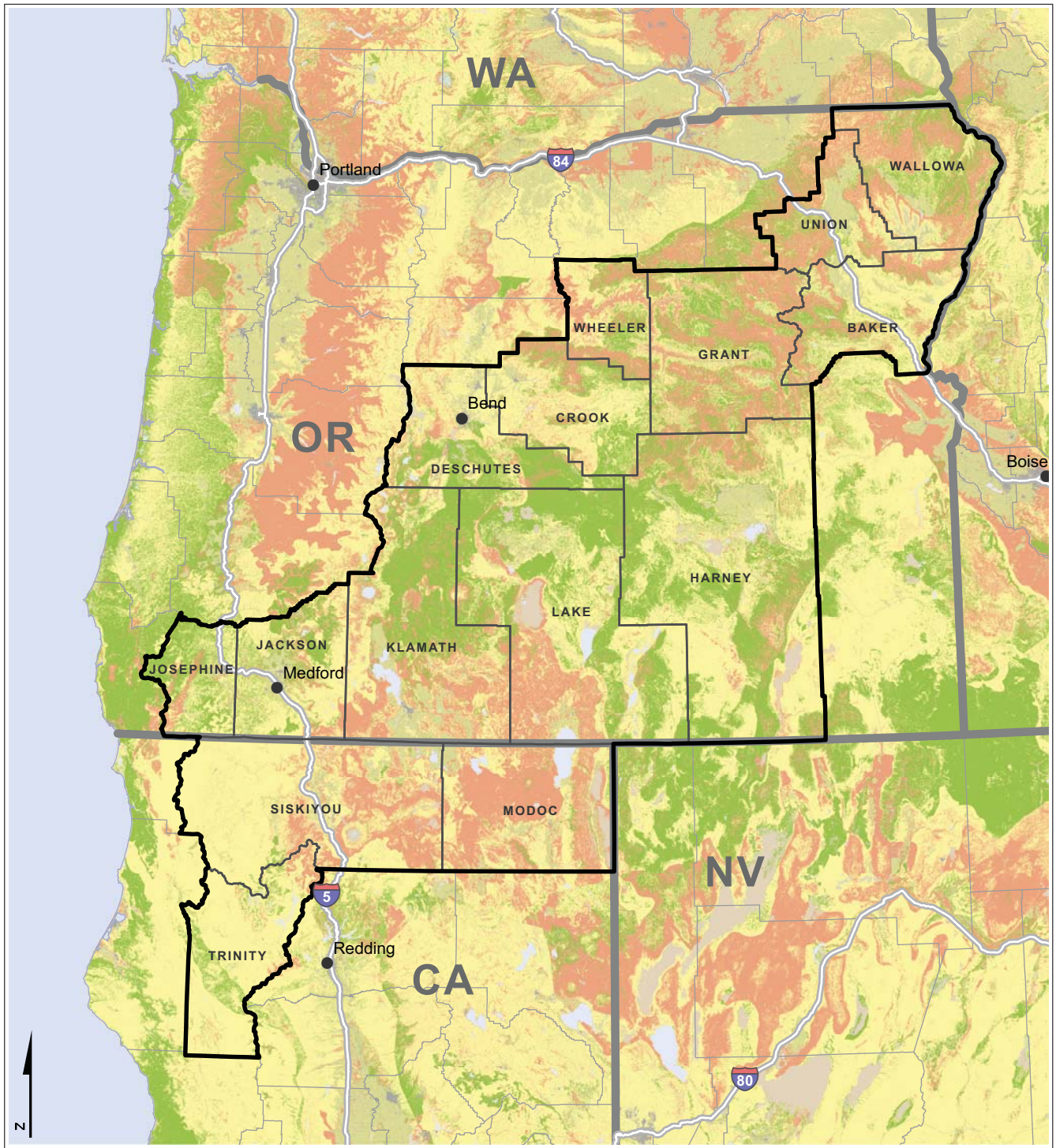
Interstates

US Forest Service lands

Other federal lands

Fire regime condition class

Dry Forest Investment Zone



Data source: Landfire.gov

FIRE REGIME CONDITION CLASS

Fire regime condition class (FRCC) measures the departure of current vegetation from its historic conditions of wildfire frequency and severity. Much of the DFIZ's forests and rangelands are highly departed from their historical fire regimes. This has increased forest fuel loads and wildfire risk.

Condition class

- FRCC Class I
- FRCC Class II
- FRCC Class III

Land cover

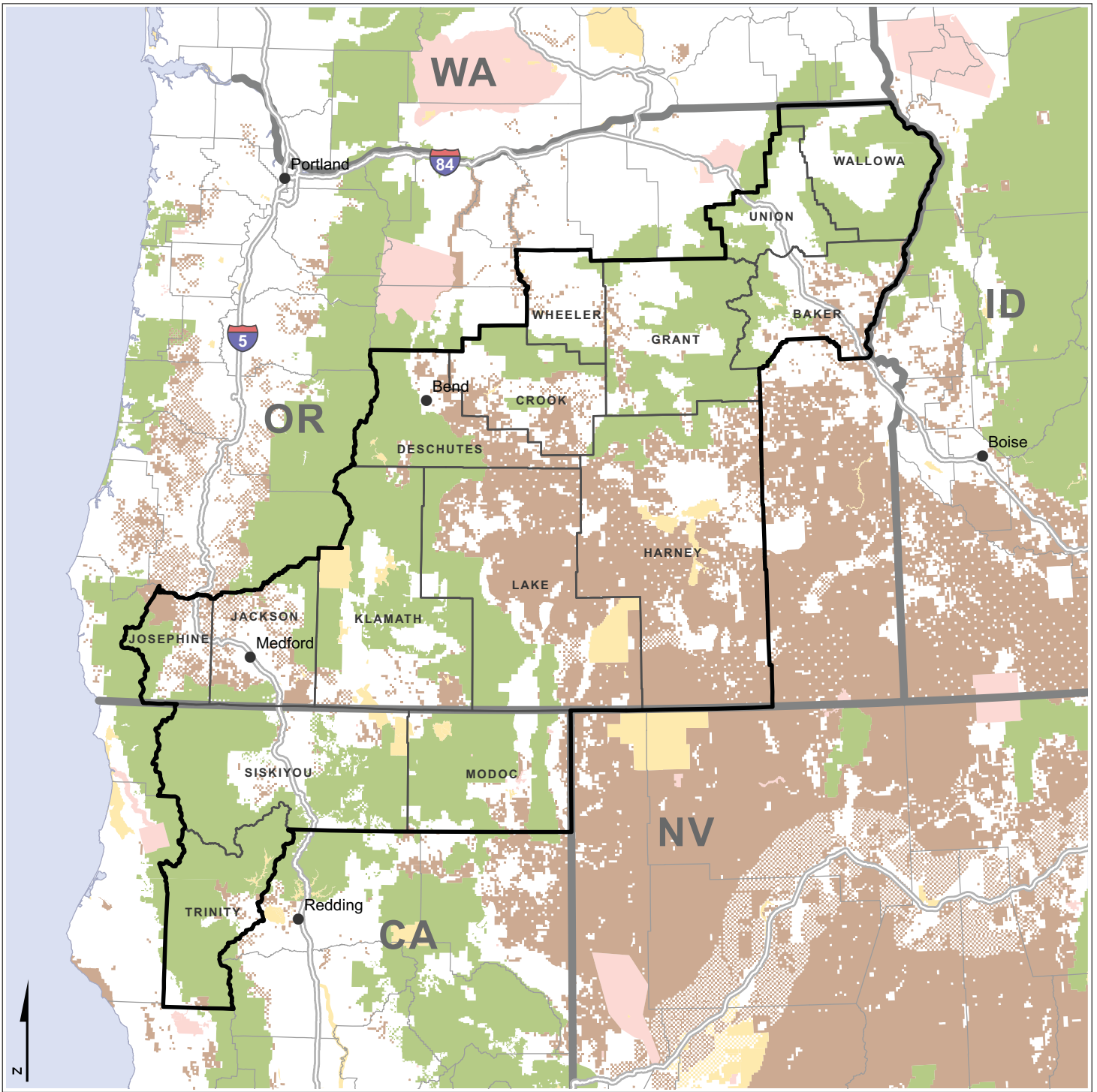
- Water
- Snow and ice
- Urban
- Barren
- Sparsely vegetated
- Agriculture

0 Miles 100

Interstates

Federal land ownership

Dry Forest Investment Zone



Data source: National Atlas

FEDERAL LAND OWNERSHIP

Federally-owned lands cover 68% of the DFIZ and much of the West. This affects the opportunities and constraints that rural communities face in fostering natural resource-based economic development.

Land management

- US Forest Service
- Bureau of Land Management
- Other federal agencies
- Indian reservations

0 Miles 100

Interstates



UNIVERSITY OF OREGON